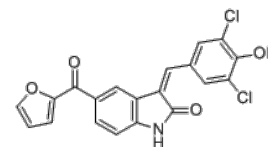


**Product Name** : GW406108X  
**Cat. No.** : PC-35945  
**CAS No.** : 1644443-92-4  
**Molecular Formula** : C<sub>20</sub>H<sub>11</sub>Cl<sub>2</sub>NO<sub>4</sub>  
**Molecular Weight** : 400.211  
**Target** : Kinesin  
**Solubility** : 10 mM in DMSO



## Biological Activity

GW406108X (GW-406108X, GW108X) is specific inhibitor of **Kif15** (Kinesin-12) with IC<sub>50</sub> of 0.82 μM in ATPase assays. GW108X displays a preference for Kif15 over the other mitotic motors, with 30 μM of GW108X inhibiting Kif15 MT gliding by 98.9% ± 0.2% while only inhibiting Eg5 by 19.8% ± 4.3%, HSET by 5.3% ± 2.9% and Kif18A by 4.9%. GW406108X inhibits the MT-stimulated ATPase and MT gliding activity of Kif15 either by inhibiting ATP binding or by inhibiting MT binding by the motor.

GW406108X shows a distinct mechanism of action compared with the Kif15 inhibitor, Kif15-IN-1.

## References

Dumas ME, et al. *Bioorg Med Chem Lett*. 2019 Jan 15;29(2):148-154.

**Caution: Product has not been fully validated for medical applications. Lab Use Only!**

E-mail: tech@probechem.com